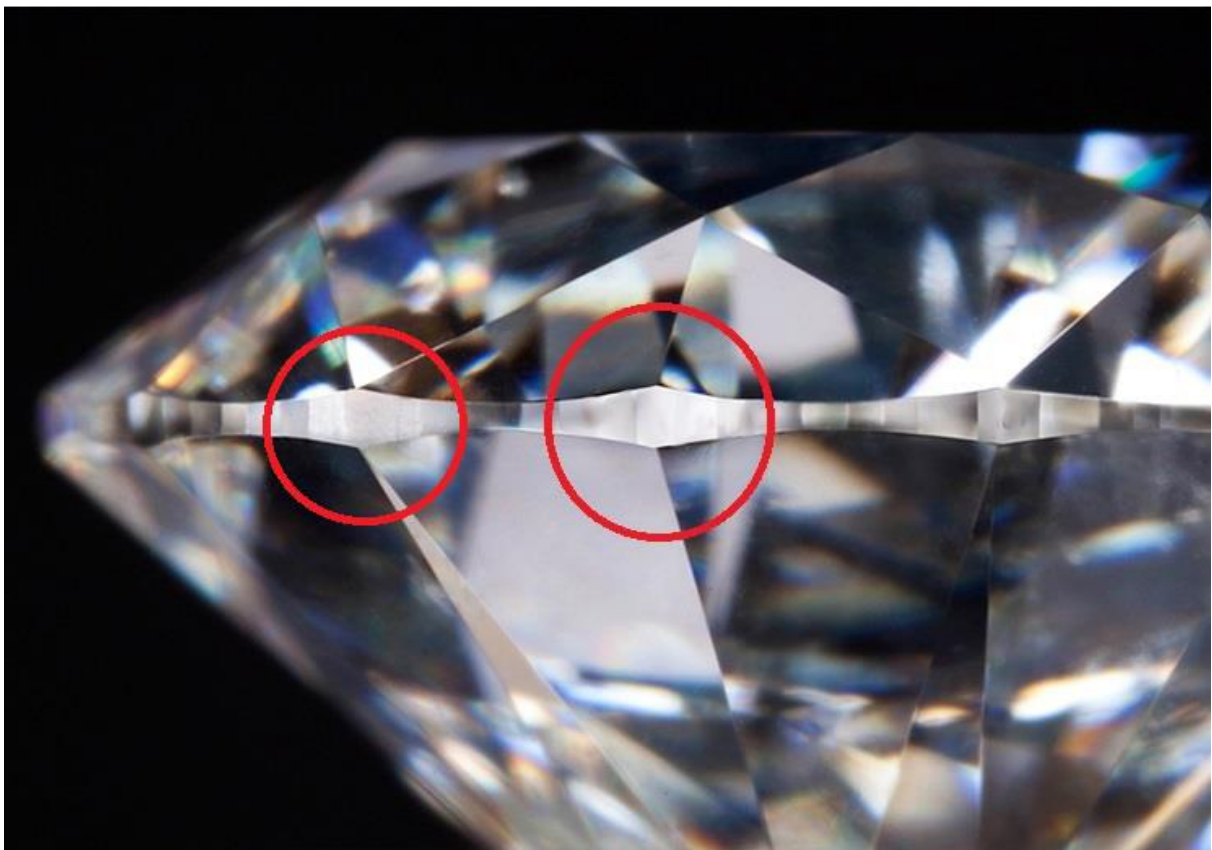


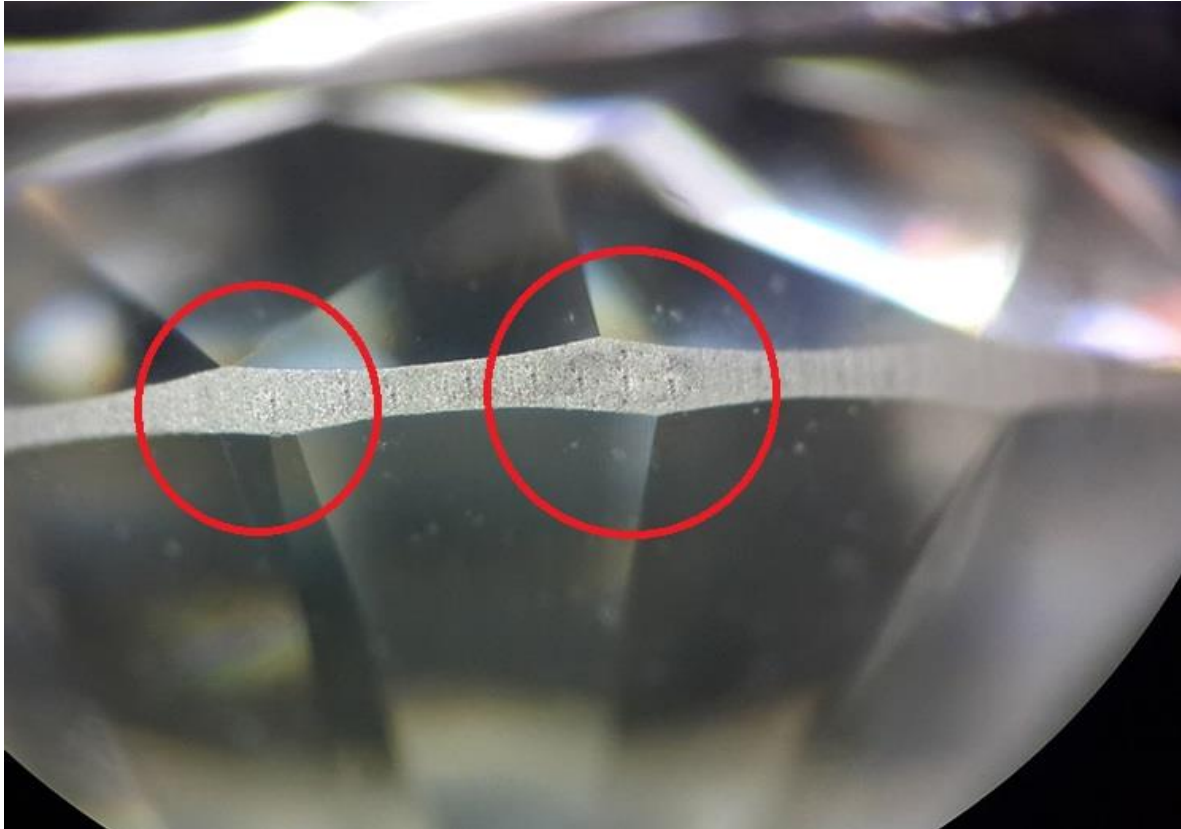
Симетрия (Symmetry)

Този параметър влияе върху усещането за свършена форма и дава оценка за нивото на майсторска обработка. Критериите за оценка на симетрията са Excellent, Very Good, Good, Fair, Poor в зависимост от степента на допустимото отклонение.

По този начин изглежда диамант със симетрия Excellent: ребрата на короната идеално съвпадат с ребрата на павилиона.



По този начин изглежда диамант със симетрия Good: Ребрата на короната не съвпадат с ребрата на павилиона.



GIA REPORT
1257367895

Verify this report at gia.edu

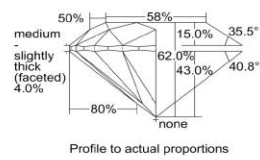
FACSIMILE

This is a digital representation of the original GIA Report. This representation might not be accepted in lieu of the original GIA Report in certain circumstances. The original GIA Report includes certain security features which are not reproducible on this facsimile.

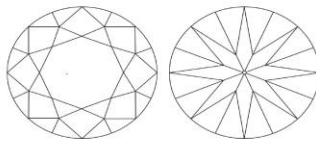
GIA DIAMOND GRADING REPORT	
April 06, 2017	
GIA Report Number	1257367895
Shape and Cutting Style	Round Brilliant
Measurements	8.09 - 8.15 x 5.03 mm
GRADING RESULTS	
Carat Weight	2.06 carat
Color Grade	D
Clarity Grade	VVS2
Cut Grade	Excellent
ADDITIONAL GRADING INFORMATION	
Polish	Excellent
Symmetry	Excellent
Fluorescence	Strong Blue
Inscription(s):	GIA 1257367895

www.gia.edu

PROPORTIONS



CLARITY CHARACTERISTICS



KEY TO SYMBOLS*
Pinpoint

* Red symbols denote internal characteristics (inclusions). Green or black symbols denote external characteristics (blemishes). Diagram is an approximate representation of the diamond, and symbols shown indicate type, position, and approximate size of clarity characteristics. All clarity characteristics may not be shown. Details of finish are not shown.

GRADING SCALES

GIA COLOR SCALE	GIA CLARITY SCALE	GIA CUT SCALE
D	FLAWLESS	EXCELLENT
E	FLAWLESS	
F	FLAWLESS	VERY GOOD
G	VVS ₁	
H	VVS ₂	GOOD
I	VS ₁	
J	VS ₂	FAIR
K	S ₁	
L	S ₂	POOR
M	I ₁	
N	I ₂	
O		
P		
Q		
R		
S		
T		
U		
V		
W		
X		
Y		
Z		



The results documented in this report refer only to the diamond described, and were obtained using the techniques and equipment used by GIA at the time of examination. This report is not a guarantee or valuation. For additional information and important limitations and disclaimers, please see www.gia.edu/terms or call +1 800 421 7250 or +1 760 402 4500. ©2014 Gemological Institute of America, Inc.

reportcheck.gia.edu



THE SECURITY FEATURES IN THIS DOCUMENT, INCLUDING THE Hologram SECURITY STRIPS AND MICROPRINT LINES, IN ADDITION TO TAGS, NUM LISTEN, EXCELLENCE DOCUMENT, SECURITY RESPONSIBILITY GUIDELINES.